



# ¿WHO WE ARE?

We are a supplier in  
**LOGISTICS SERVICES, ALL IN ONE.**

The NAFTA, now called USMCA & since 1980, we have offered services to the IMMEX market including the automotive industry and other manufacturing industrial sectors.

▶ **OUR GROUP OF COMPANIES ACHIEVED THE NEEDED EXPERIENCE TO THE HIGHEST LEVEL TO PROVIDE THE BEST SUPPORT IN ANY TYPE OF PROCESS & CONTRIBUTE TO A DIGITAL TRANSFORMATION ENVIRONMENT.**

## **WE ARE A TRADE & CUSTOMS GROUP OF PROFESSIONALS**

Created to provide specialized international trade services.

Through the customs ports of **Reynosa, Nuevo Laredo, Matamoros, Altamira, Monterrey, Querétaro, Colombia, Manzanillo, Veracruz y Lázaro Cárdenas.**

Our purpose is to provide trustworthy solutions to importers and exporters, smooth Customs clearance with logistics advisory focused on cost reduction and transparency, with competitive prices and an excellent personalized service.





Our Vision is to become a leading company in its field, guaranteeing satisfaction of our clients offering quality services, in order to participate competitively in international markets contributing to the economic and social development of our country.

# VISION



# MISSION

We care that our clients receive a quality service from us and professional advice, complying 100% with their requirements and needs. Achieving a fair and productive benefit for both parties.

We offer continuous improvement of our services and trade compliance advice, with the aim to meet the expectations and needs of our customers, always keeping in mind the task to apply our basic concepts. Based on:

**ATTITUDE, EFFICIENCY, EFFORT, PRODUCTIVITY, ACCURACY & HONESTY.**



We're a company with **40 YEARS OF EXPERIENCE** with renowned prestige in Mexico and USA.



With an increasing volume of import and export operations from the automotive, electronic, textile and household appliance industry.

*Our business partners have allowed us to provide a service considered:*

**ALL IN ONE**



Warehouse  
US and MX



Customs broker  
US and MX



PORT SERVICES





# ► FREIGHT SERVICES



## OUR VALUE PROPOSAL

- TRAILER DRAYAGE
- TRAILER MONITORING
- TRAILER FOR STORAGE
- BILINGUAL TEAM
- NEW TRUCKS
- PORTS, EXPEDITES AND TRANSFER
- HOT SHOT INTERMODAL
- OVERSIZE AND OVERWEIGHT

**EQUIPMENT**

**+500** TRUCKS

**+900** TRAILERS

## OUR SERVICES

**INTERNATIONAL SUPPORT**  
Expedited, transfer and foreign.

**TRANSPORTATION**  
Mexico, USA and Canada.

**DOOR TO DOOR.**

**FTL - LTL**

**CUSTOMER SERVICE AND  
GPS TRACKING.**

**24/7**

**3PL**

*BROKER MC 807033  
CARRIER MC 697365  
DOT-1970020*





CONSOLIDADORA DE  
SERVICIOS ADUANALES S.C.



# ▼ SERVICES

- ✓ CUSTOMS BROKERAGE IN MEXICO AND USA.
- ✓ UNITED STATES FOREIGN TRADE ZONE AND WAREHOUSING.
- ✓ CONSOLIDATED FREIGHT.
- ✓ AES/EEI/SED TRANSMISSIONS.
- ✓ ISF FILING.
- ✓ RECONCILIATIONS AND DRAWBACKS.
- ✓ CBP-CF28.
- ✓ PEDIMENTS REGIME: A1, IN, AF, V1, A3, F4, D1, L1, B0 AND VN.
- ✓ VIRTUAL OPERATIONS.
- ✓ CUSTOMS CLEARANCE DOCUMENT (DODA).
- ✓ INTERNATIONAL TRADE SERVICES IMPORT-EXPORT.
- ✓ PORT SERVICES MEXICO, USA, ASIA AND EUROPEAN UNION.





# ▶ PORTS

We're aware that each one of our customers have different needs, therefore, we strive to look for the best solution and create a tailored option designed specifically to satisfy them.

MANZANILLO, COLIMA / LÁZARO CÁRDENAS, MICH. / ALTAMIRA, TAMP. / VERACRUZ, VER.



## MARITIME ROUTES

NORTH AMERICA

EUROPEAN UNION

ASIA

MORE THAN  
**+1000**  
CONTAINERS  
PER YEAR

MORE THAN  
**+500**  
CONSOLIDADOS  
PER YEAR

## SERVICES

**SERVICE FCL**  
(FULL CONTAINER LOAD)

We collect your merchandise at point of origin. Ocean container freight service.

**SERVICE LCL**  
(LESS THAN CONTAINER LOAD)

We collect your merchandise at point of origin and consolidate it. Service available starting from 1 pallet.

**SPECIAL SERVICES**

Oversize loads, special heavy machinery projects, bulk product, etc.

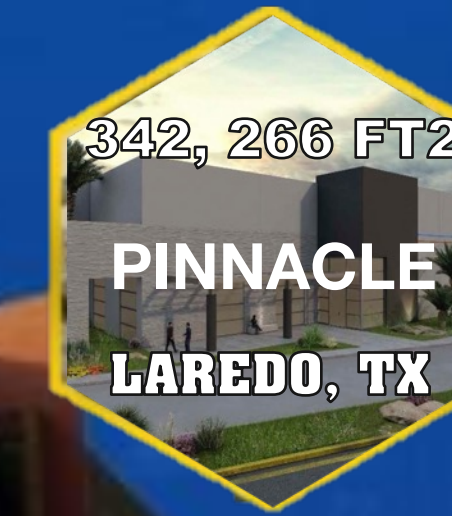
CUSTOMS CLEARANCE - WAREHOUSE AND FREIGHT COORDINATION - CARGO DECONSOLIDATION - CARGO CONSOLIDATION - SHRINK WRAPPING, PALLETIZING  
STRAPPING - PALLET FUMIGATION - CONTAINER CLEANUP - CCTV - 24/7 SECURITY - CONTROLLED PREMISES.



# ▶ WAREHOUSE

## LOCATIONS

RACK CONFIGURATION  
ACCORDING TO CLIENT  
NEEDS



✓ Available Space

## SERVICES

- ✓ Storage.
- ✓ HTS Classification.
- ✓ Cargo consolidation and deconsolidation.
- ✓ Warehouse, Distribution (raw materials + finished goods).
- ✓ Order delivery compliance utilizing Pick / Pack / Ship.
- ✓ US Bonded Warehouse & FTZ.
- ✓ Cross Dock operation.

- ✓ Customer labeling.
- ✓ Logistics.
- ✓ Internal quality classification.
- ✓ Merchandise inspection.
- ✓ CCTV.
- ✓ Personalized audits / Training.
- ✓ Annex 24 and 31 support.



# NEW WAREHOUSE

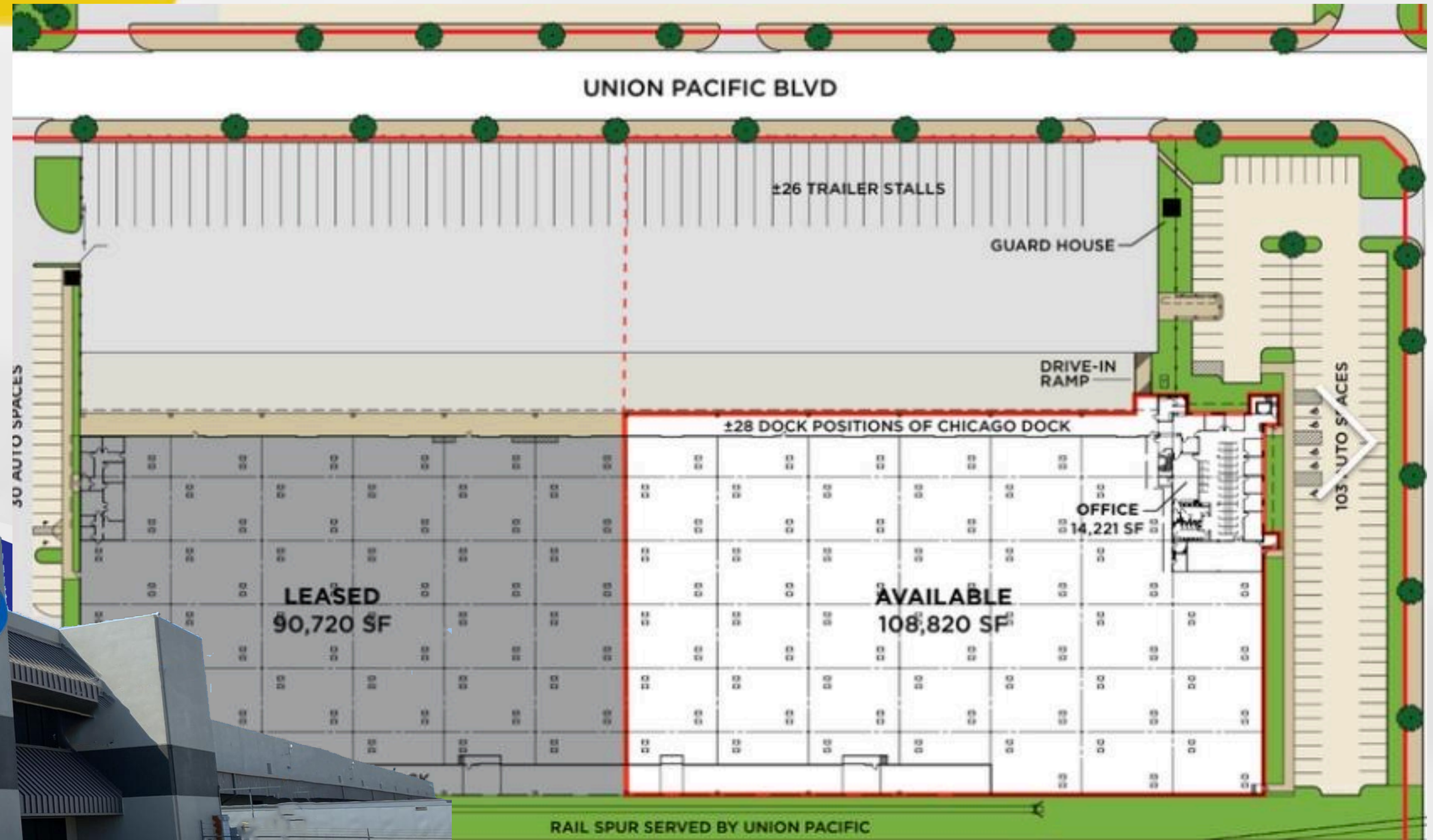
## LAREDO, TEXAS



417 Union Pacific Blvd,  
Laredo, Texas 78045.

108,820 SF

AVAILABLE





# NEW WAREHOUSE

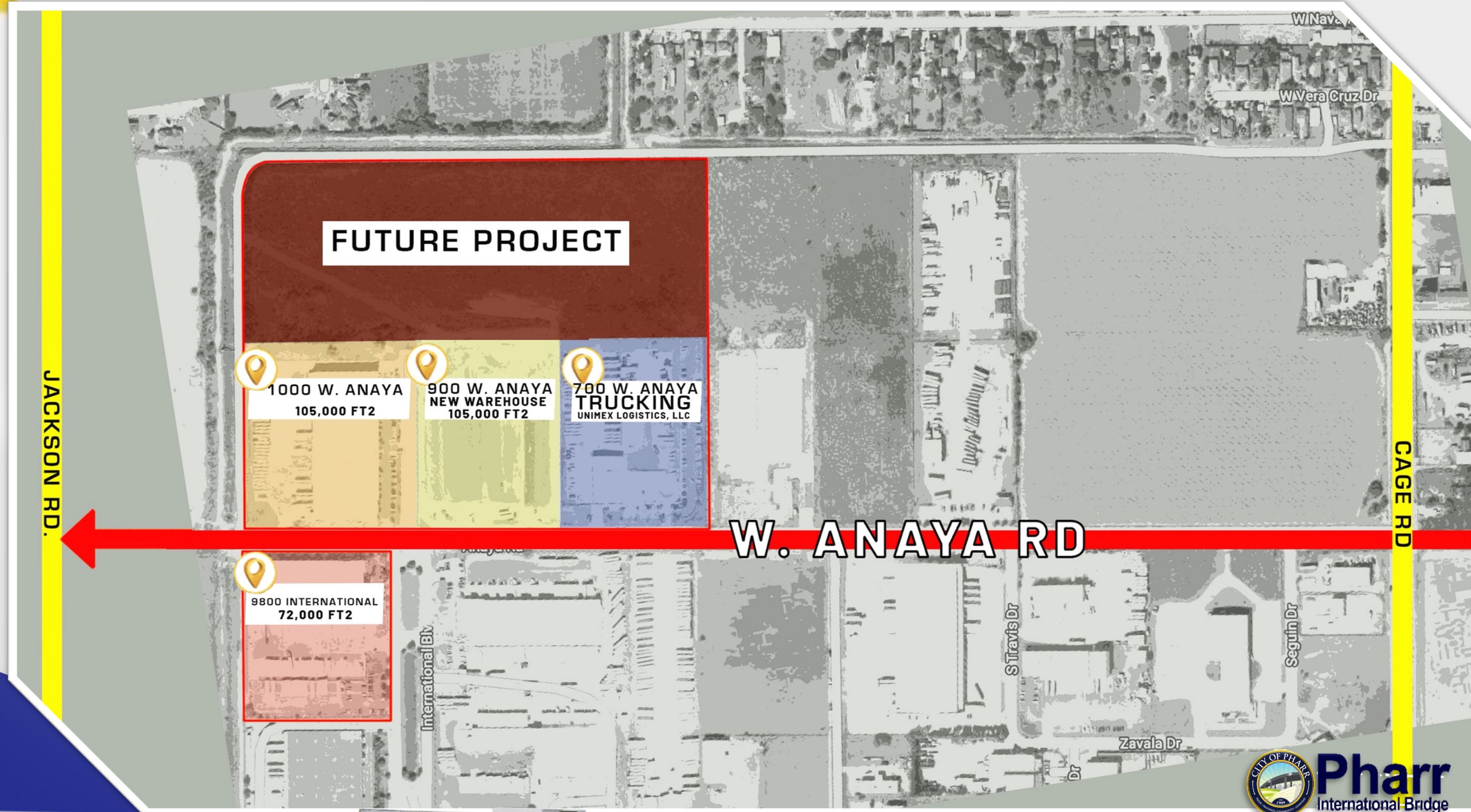
## PHARR, TEXAS



PHARR  
LOGISTICS CENTER

900. W. ANAYA RD, PHARR, TEXAS 78577

- ✓ 105,000 ft<sup>2</sup>
- ✓ 24 Docks and 1 Ramp
- ✓ 4,500 Locations Available



3 warehouse building  
in the same Street West ANAYA Rd.



# NEW WAREHOUSE LAREDO, TEXAS

342,266 SF

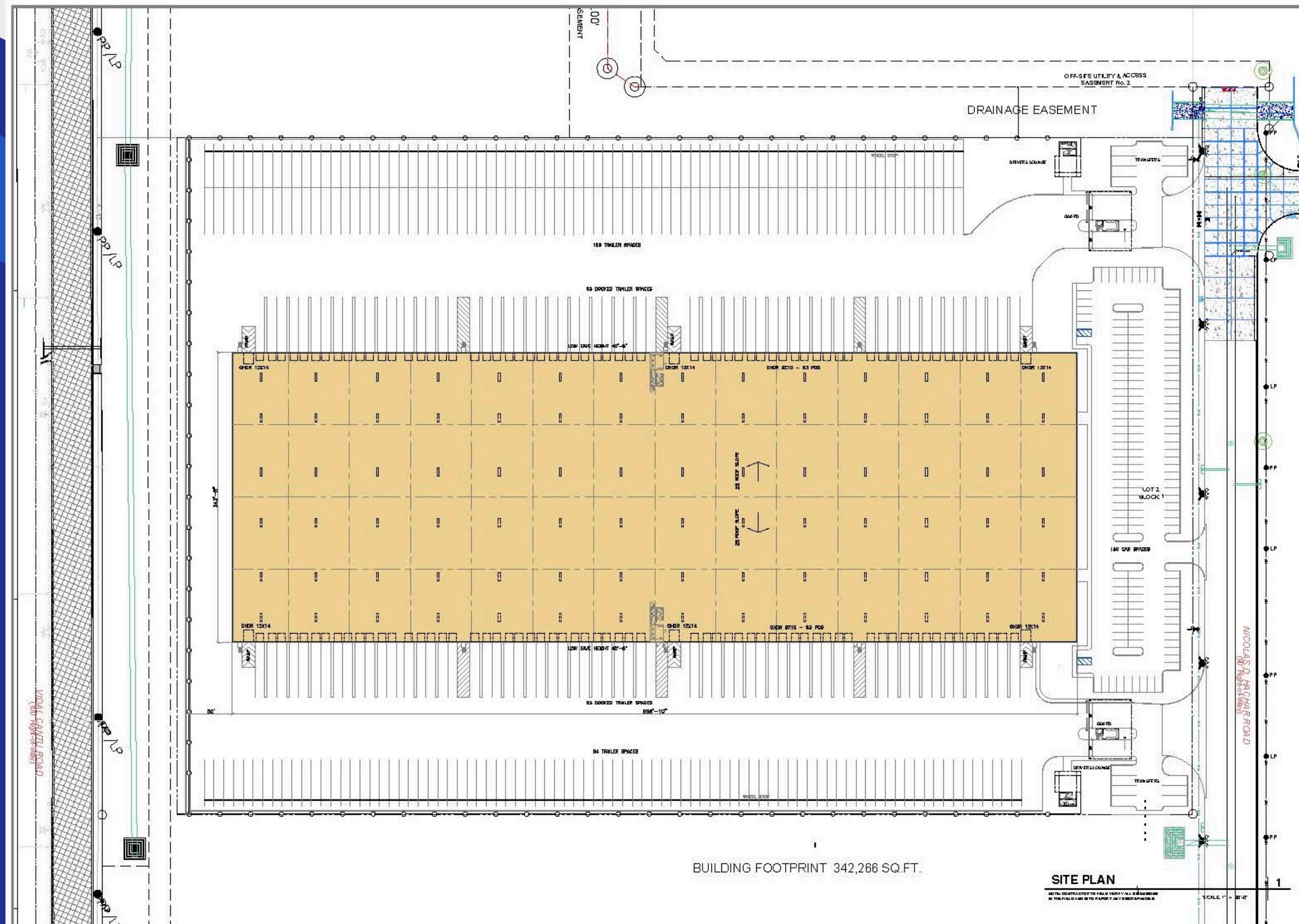
1501 Nicolás D Hachar Rd, Laredo, TX

SITE PLAN



## Pinnacle Industrial Park

- ✓ 5,000 SF Office Space
- ✓ 40' Clear Height
- ✓ 126 Dock High Doors
- ✓ 6 Ramped Doors
- ✓ 240 Trailer Parks
- ✓ 150 Car Parks
- ✓ ESFR Fire Sprinklers
- ✓ Guard Shacks
- ✓ Drivers Lounges





# WAREHOUSE PHARR, TEXAS



300 E. CAPOTE CENTRAL BLVD, PHARR, TEXAS 78577



## CAPOTE INTERNATIONAL BUSINESS PARK

- ✓ Bonded Warehouse
- ✓ 17 Docks
- ✓ Available offices



▶ Less than one from the Pharr – Reynosa international bridge



100,000 FT<sup>2</sup>



AVAILABLE SPACE

130,000 FT<sup>2</sup>

MILE 13 - LAREDO, TX



**ALL  
IN ONE  
LOGISTICS**



42 loading and unloading docks.



Rapid access to HWY-35 and industrial areas.



More than 600 racks for storage and logistic operations.



Automated systems and CCTV 24/7





# WAREHOUSE IN REYNOSA, MÉXICO



AV. MIKE ALLEN #102, PARQUE INDUSTRIAL REYNOSA



6 docks for loading and unloading



Storage and distribution without 3rd parties.




All in one warehouse services and logistic operations.

**IMMEX**

Transloading services





# Strategically Located



-  REYNOSA INDUSTRIAL ZONE
-  REYNOSA INDUSTRIAL ZONE NORTH AREA
-  REYNOSA INTERNATIONAL AIRPORT  
1 MIN. – 2.6 KM
-  PHARR INTERNATIONAL BRIDGE  
5 MIN. – 5.1 KM
-  HIDALGO INTERNATIONAL BRIDGE  
15 MIN. – 10.6 KM





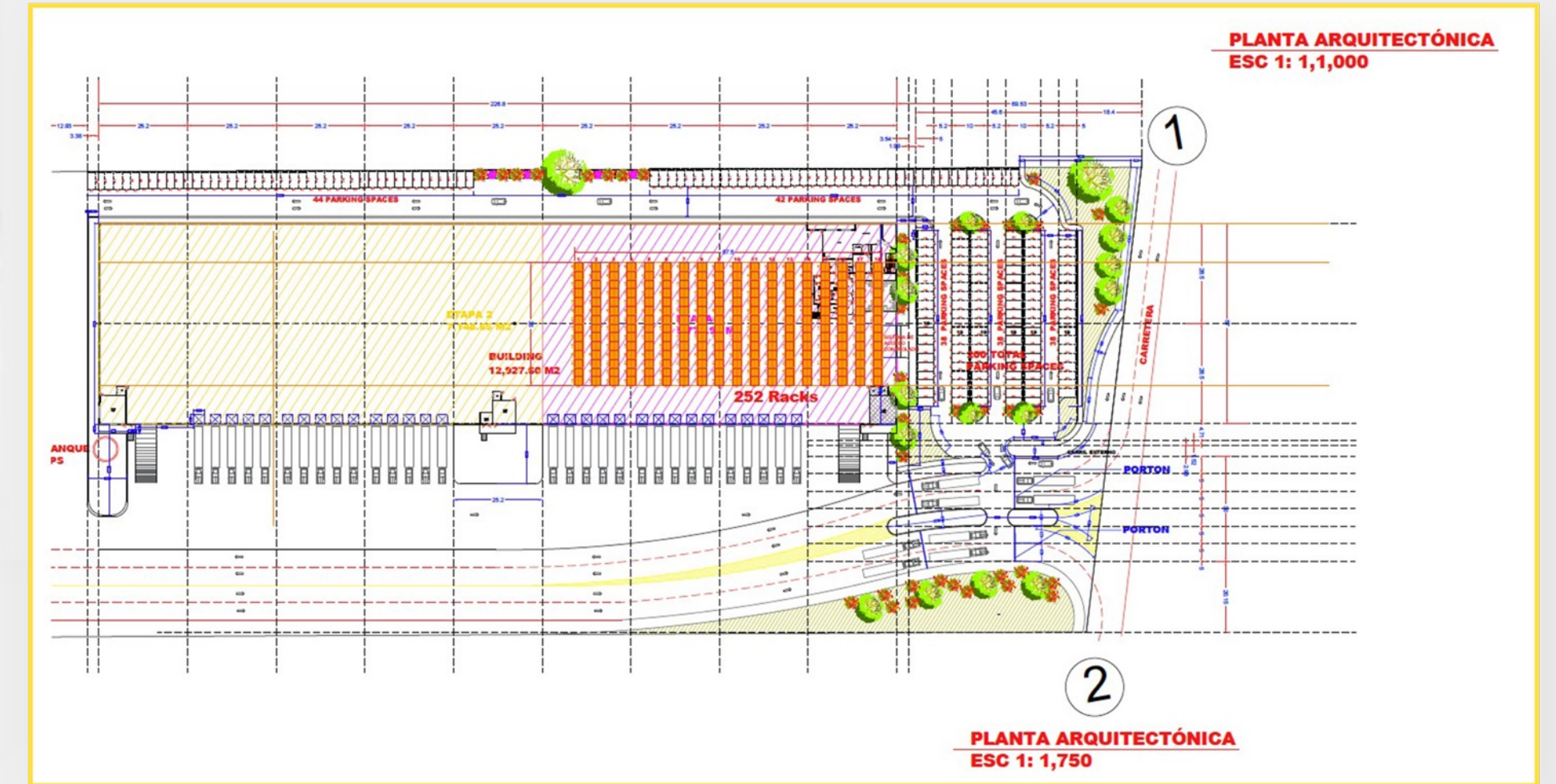
# NEW INDUSTRIAL PARK

REYNOSA, MX

# 30 Acres

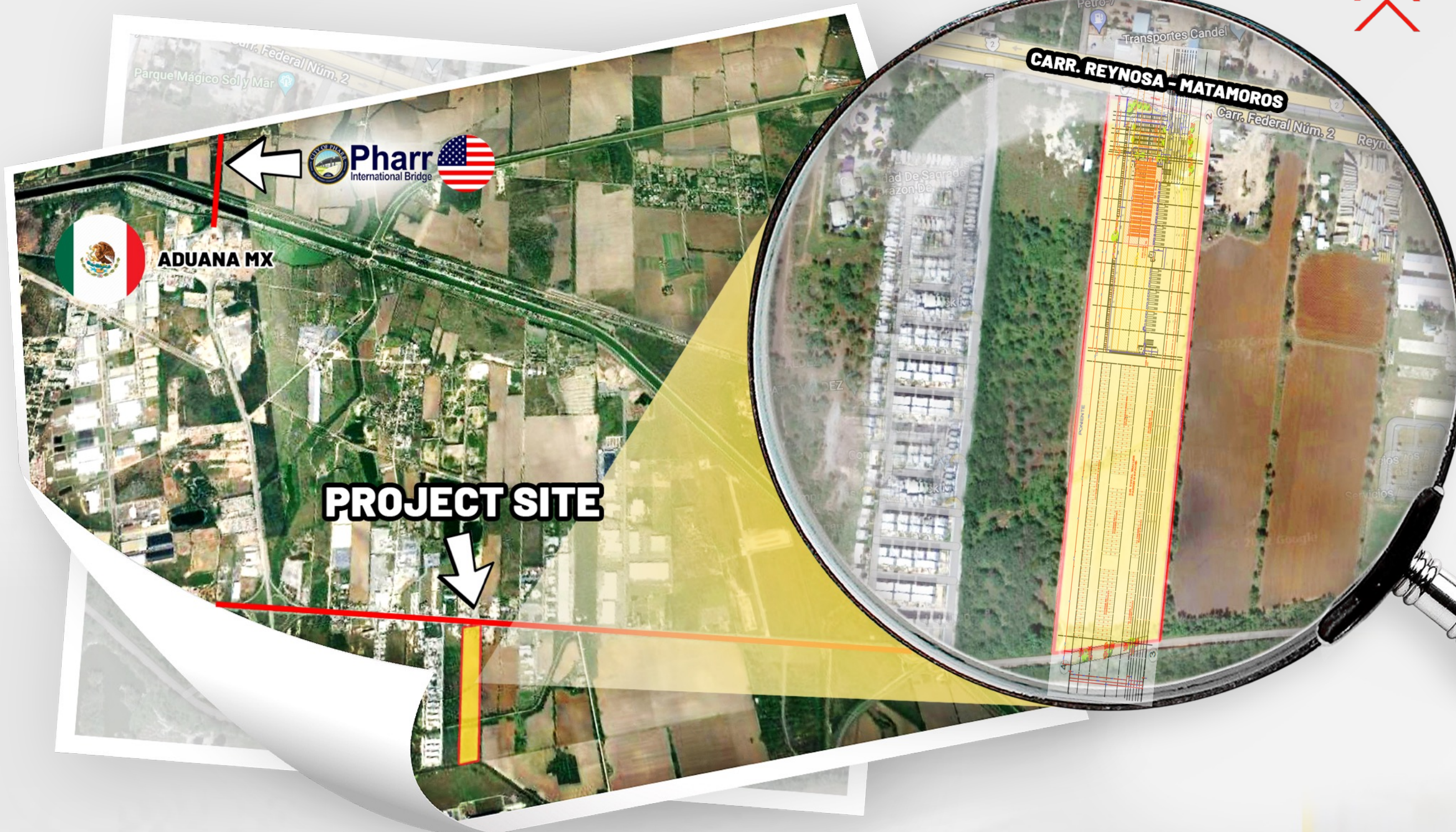
12 hectares

WAREHOUSE, OFFICE, AND YARD PROJECT



PHASE #1 : 139,145 FT<sup>2</sup>  
PHASE #2 : 76,947.4 FT<sup>2</sup>

- 252 Racks
- 200 Parking spaces
- 30 Loading and unloading docks
- 241 Trailer parking spaces







- Customs consulting.
- Administration of annex 24 and 30
- Management
- Analysis of bills of materials to determine the country of origin.
- Tax calculation.
- Analysis of tariff classification.
- Review of customs operations
- Third Party Importer of Record Service
- Carta Porte Electronica
- Certified verifier (Mex. NOM)

UNITED STATES MEXICO CANADA AGREEMENT (USMCA) CERTIFICATION OF ORIGIN					
1. CERTIFIER TYPE (INDICATE "X")				BLANKET PERIOD (MM/DD/YYYY)	FROM: TO:
IMPORTER	EXPORTER	PRODUCER			
2. CERTIFIER NAME, ADDRESS, PHONE, AND EMAIL NAME ADDRESS COUNTRY PHONE EMAIL TAX IDENTIFICATION NUMBER			3. EXPORTER NAME, ADDRESS, PHONE, AND EMAIL NAME ADDRESS COUNTRY PHONE EMAIL TAX IDENTIFICATION NUMBER		
4. PRODUCER NAME, ADDRESS, PHONE, AND EMAIL NAME ADDRESS COUNTRY PHONE			5. IMPORTER NAME, ADDRESS, PHONE, AND EMAIL NAME ADDRESS COUNTRY PHONE		

PEDIMENTO						Página 1 de N	
NUM. PEDIMENTO:		T. OPER CVE. PEDIMENTO:		REGIMEN:		CERTIFICACIONES	
DESTINO:		TIPO CAMBIO:		PESO BRUTO:		ADUANA E/S:	
MEDIOS DE TRANSPORTE ENTRADA/SALIDA: ARRIBO: SALIDA:				VALOR DOLARES: VALOR ADUANA: PRECIO PAGADO/VALOR COMERCIAL:			
DATOS DEL IMPORTADOR /EXPORTADOR							
RFC:		NOMBRE, DENOMINACION O RAZON					
SOCIAL:							
CURP:							
DOMICILIO:							
VAL. SEGUROS	SEGUROS	FLETES	EMBALAJES	OTROS INCREMENTABLES			
CODIGO DE ACEPTACION:		CODIGO DE BARRAS		CLAVE DE LA SECCION ADUANERA DE DESPACHO:			
MARCAS, NUMEROS Y TOTAL DE BULTOS:							
FECHAS		TASAS A NIVEL PEDIMENTO					
		CONTRIB.		CVE. T. TASA		TASA	
CUADRO DE LIQUIDACION							
CONCEPTO	F.P.	IMPORTE	CONCEPTO	F.P.	IMPORTE	TOTALES	
						EFFECTIVO	
						OTROS	
						TOTAL	
DEPOSITO REFERENCIADO - LINEA DE CAPTURA							
 www.unimexgroup.com ***PAGO ELECTRONICO***							

MAIL			
X IDENTIFICATION NUMBER			
8. ORIGIN CRITERION	9. PRODUCER (YES/NO)	10. METHOD OF QUALIFICATION	11. COUNTRY OF ORIGIN
ATTACHMENT SHEET(S)			
DECLARING AND THE INFORMATION CONTAINED IN THIS DOCUMENT IS TRUE AND AGREE TO MAINTAIN AND PRESENT UPON REQUEST OR TO MAKE SUPPORT THIS CERTIFICATION			
ATTACHMENTS:			
12b. COMPANY			
12d. TITLE			
12g. EMAIL			

USMCA CERTIFICATE V3





# OUR LOCATIONS



- Custom Broker
- Transport
- ▲ Warehouse
- 🚢 Ports



# CERTIFICATIONS

**WE ARE A COMPANY CERTIFICATED** In ISO 9001:2015.

Licensed Customs Broker Alfonso Borquez #1488 and #3561.

Certificated NMX-E026-SCFI-2009.

Quality Customs Brokers and authorized economic operator.

THIS CERTIFIES THAT  
**Unimex Trade & Logistics, LLC**

NMSDC  
National Minority Supplier  
Development Council

\* Nationally certified by the: **SOUTHWEST MINORITY SUPPLIER DEVELOPMENT COUNCIL**

\* NAICS Code(s): 488510

\* Description of their products/services as defined by the North American Industry Classification System (NAICS)

05/28/2022  
Issued Date

05/28/2023  
Expiration Date

AU04983  
Certificate Number

Ying McGuire  
NMSDC CEO and President

Karen Box  
President/CEO

By using your password (NMSDC issued only), authorized users may log into NMSDC Central to view the entire profile: <http://nmsdc.org>

Certify, Develop, Connect, Advocate.

\* MBEs certified by an Affiliate of the National Minority Supplier Development Council, Inc.®



U.S. Customs & Border Protection  
U.S. Department of Homeland Security

CTPAT™  
YOUR SUPPLY CHAIN'S STRONGEST LINK

Company Name: Unimex Trade & Logistics LLC DBA: Unimex Trade & Logistics LLC

Unimex Trade & Logistics LLC - Security Models

Click Apply to C-TPAT to create a new Security Model within your Trade Account.  
Click Manage C-TPAT Security Models to Duplicate, Split, or Merge existing Security Models.  
For more details on these Model Operations see the C-TPAT Portal 2.0 Trade User Manual.

Apply to C-TPAT | Manage C-TPAT Security Models

Model Name	Unimex Trade & Logistics LLC - Licensed U.S. Customs Broker	Model Number	836	Select...
Business Type	[Licensed U.S. Customs Broker]	C-TPAT Account #	[17418051]	
Security Profile Status	Approved	Status	Validated	
Certified Date	08/16/2007	Anniversary Date	08/16/2023	
		Next Tentative Validation	2023	
SCSS Information				
Name	Sandra Alvarado	Phone	281-594-5447	Email sandra.lalvarado@cbp.dhs.gov
Office	Houston			
Primary POC Information				
Name	Adolfo Campero	Phone	956-489-3333	Email adolfo@unimextrade.com



intertek  
Total Quality Assured

## CERTIFICATE OF REGISTRATION

This is to certify that the management system of:  
**Transportes Unimex, S.A. de C.V.**

Main Site: Cumbres de Acutzingo #618 Colonia Almaguer, Ciudad Reynosa, Tamaulipas, 88780, México  
See appendix for additional sites and additional site scopes  
has been registered by Intertek as conforming to the requirements of:  
**ISO 9001:2015**

The management system is applicable to:  
Freight transport in general, offering import (foreign) and export (transfer) services.

Certificate Number: 0121648  
Initial Certification Date: 01 February 2022  
Date of Certification Decision: 01 February 2022  
Issuing Date: 01 February 2022  
Valid Until: 31 January 2025

intertek  
ANAB  
ACCREDITED  
intertek  
Calm Moldoveanu  
President, Business Assurance  
Intertek Testing Services NA, Inc.  
900 Chelmsford Street, Lowell  
MA 01851, USA

Page 1 of 1

We are part of INDEX organization  
In Reynosa and Nuevo Laredo.





# LICENSES



## U.S. Customs and Border Protection

**UNIMEX TRADE & LOGISTICS, LLC** – U. S. Customs Broker License #24085  
**ADOLFO CAMPERO JR.** – U. S. Customs Broker License #23059  
**UNIMEX LOGISTICS, LLC - BONDED CARRIER** – Bond No. 17C003LYW  
**UNIMEX TRADE & LOGISTICS - BONDED WAREHOUSE** – Bond No. 17C0041QT  
**FOREIGN TRADE ZONE** – Bond No. 17C0041EU



## U.S. Department of Transportation

**UNIMEX TRADE & LOGISTICS, LLC**  
FREIGHT FORWARDER – DOT #3114254

**UNIMEX LOGISTICS, LLC**  
INTERSTATE MOTOR CARRIER – DOT #1970020  
FEDERAL FREIGHT BROKER – DOT #2359650

**UNIMEX FREIGHT, LLC**  
INTERSTATE MOTOR CARRIER – DOT #2782554  
FEDERAL FREIGHT BROKER – DOT #2782554

**UNIFREIGHT TRUCKING, LLC**  
INTERSTATE MOTOR CARRIER – DOT #2473958



## U.S. FEDERAL MARITIME COMMISSION

**UNIMEX TRADE & LOGISTICS, LLC**  
NVOCC / OCEAN FREIGHT FORWARDER FMC #024969NF



**TRANSPORTES UNIMEX S.A. DE C.V.**  
Servicio de Transporte Federal Permiso: 0212128Y0C907R00D915E

**CONSOLIDADORA INTERNACIONAL DE CARGA, S.A.**  
Servicio de Transporte Federal Permiso: 15022001280238650



**CONSOLIDADORA INTERNACIONAL DE CARGA, S.C.**  
Agencia aduanal: Patentes No. 1488 & 3561

**CONSOLIDADORA INTERNACIONAL DE CARGA, S.A. DE C.V.**  
Servicio de Tránsito AGAET0013



# ***THANK YOU!***

REPRESENTATIVE CLIENTS



## ***CONTACT US***

### ADMINISTRATION

**ADALBERTO CAMPERO**

[adalberto.campero@unimexgroup.com](mailto:adalberto.campero@unimexgroup.com)

**ADOLFO CAMPERO**

[adolfo.campero@unimexgroup.com](mailto:adolfo.campero@unimexgroup.com)

**CEL: +1 (956) 489 - 3333**

### SALES MANAGER

**JAY PAK**

[jay.pak@unimexgroup.com](mailto:jay.pak@unimexgroup.com)

**CEL: +1 (956) 899 6563**

**PH: +1 (956) 213 8150 Ext. 1018**

